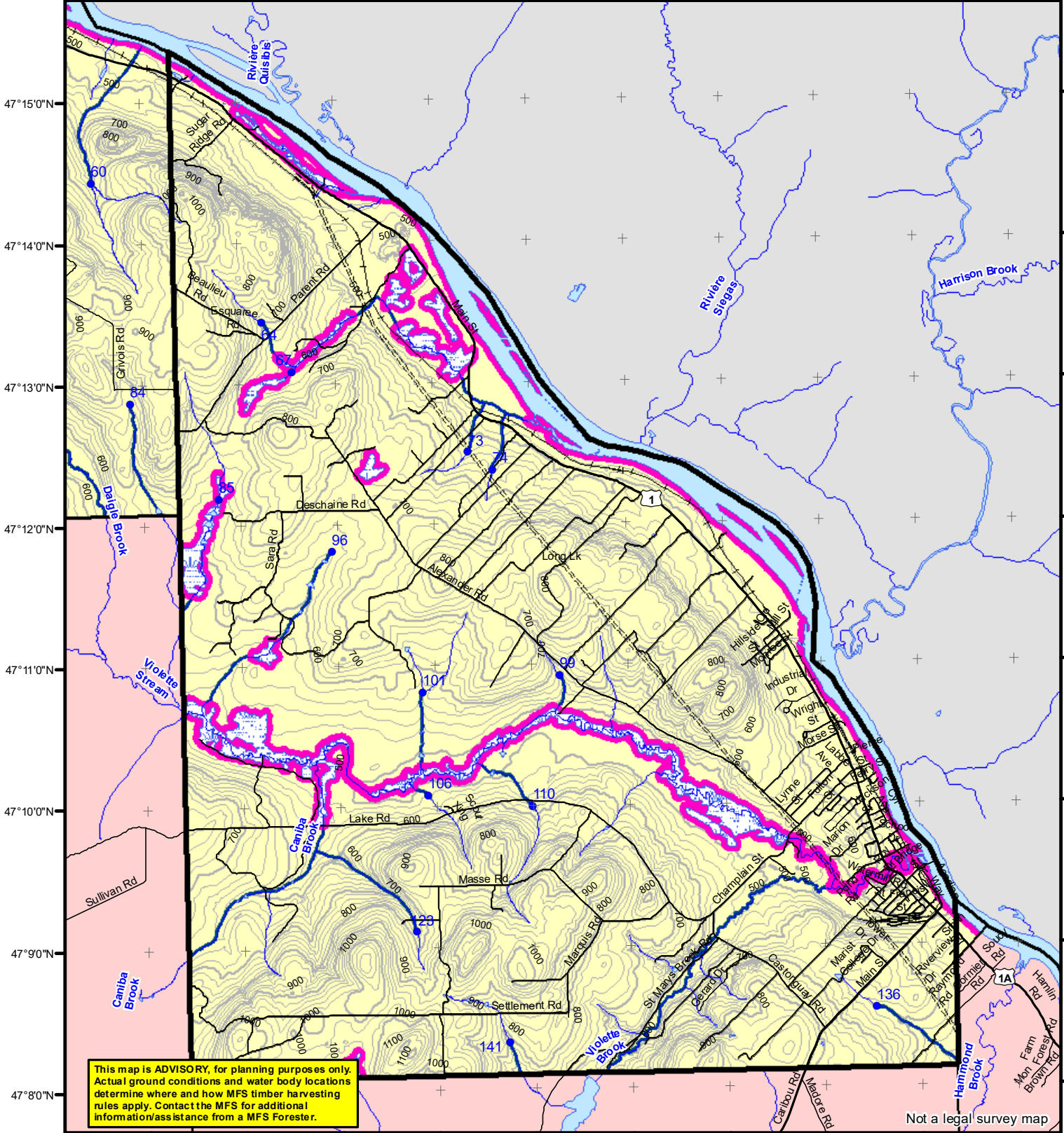


68°40'W 68°30'W 68°20'W 68°10'W 68°00'W 67°59'0"W 67°58'0"W 67°57'0"W 67°56'0"W 67°55'0"W



This map is **ADVISORY**, for planning purposes only. Actual ground conditions and water body locations determine where and how MFS timber harvesting rules apply. Contact the MFS for additional information/assistance from a MFS Forester.

Not a legal survey map

### Statewide Standards

**Buffers**

- 250 Foot Buffer Zones
- Great Ponds
- Non-forested Wetlands greater than 10 acres
- Rivers below the 25 square mile drainage point
- Coastal Wetlands
- Tidal Waters
- Essential Wildlife Habitat (Least Tern, Roseate Tern, Piping Plover)

**75 Foot Buffer Zones**

- Streams between the 300 acre drainage point and the 25 square mile drainage point

**Shoreline Integrity** - Streams draining less than 300 acres, ponds and Non-forested Wetlands greater than 0.1 acres and less than 10 acres

Shoreline Integrity also applies to UNMAPPED streams and wetlands.

**Habitat**

- Essential Wildlife Habitat (Least Tern, Roseate Tern, Piping Plover)

### Forest Operation Notification & Shoreland Area\* Map

# Van Buren

Adoption Date  
7/1/2009

December 2021

0 2,000 4,000 8,000 Feet

\*See MFS Rule - Chapter 2.1 for additional information.

Department of Agriculture, Conservation and Forestry  
Maine Forest Service  
Forest Policy & Management

**Roads**

- Interstate
- US Highway
- State Highway
- 24k Roads

**Hydrology**

- Pond or Lake
- River
- Estuary

**Streams**

- 1234 - 300 Acre Drainage Point (start of the 7.5 ft buffer)
- 1234 - ID Number (location info)
- 56 - 25 Square Mile Drainage Point (start of the 250 ft buffer)
- 56 ID Number (location info)

**Wetlands**

- Emergent or Marine Wetland
- Non-forested Wetlands Greater Than 10 acres (Lacustrine, Palustrine)

**Contours**

- 20 ft
- 100 ft

**Utilities**

- Electric
- Pipeline
- Railroad
- Airfield

**Data Source:**  
Maine Office of GIS

G.T.Miller E:\aws\SW S page size december 2021.mxd

LO Last Name \_\_\_\_\_

LO First Name \_\_\_\_\_

Prepared By \_\_\_\_\_

FONS # \_\_\_\_\_

Date \_\_\_\_\_

**FON Town**

- Orange - Statewide Standards Rules do not apply (Town/MDEP Standards apply)
- Yellow - Statewide Standards Rules Apply
- Pink - LUPC - Unorganized or Deorganized Town
- Grey - Outside Maine